



## **Venice Marco Polo Airport Traffic flows CY 2016 - Key figures**

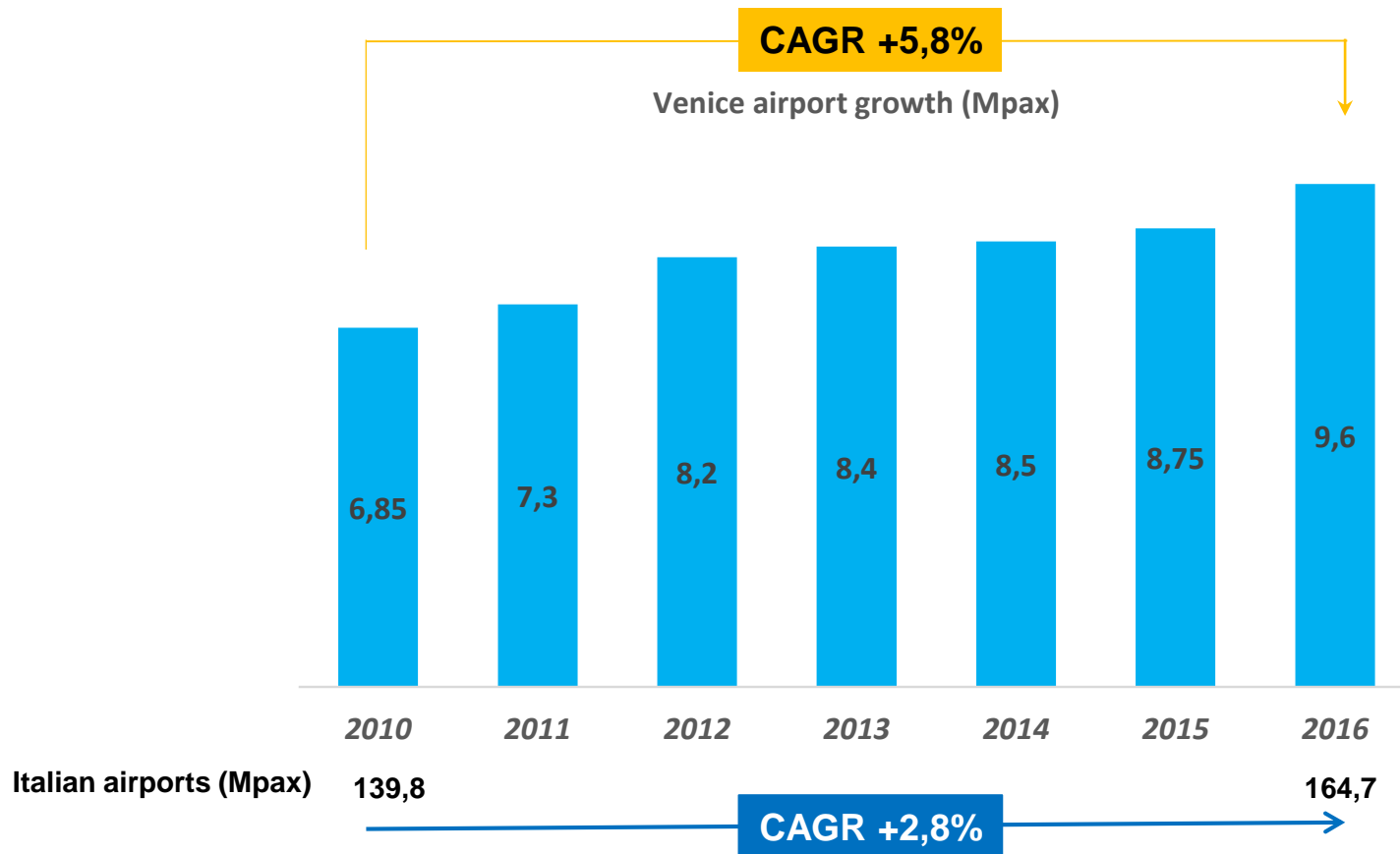
*Commercial & Mktg Aviation Department  
Issue: March 2017*

---

- A** Traffic highlights
  - B** The market
  - C** The catchment area
  - D** New investments
-


## Traffic figures CY 2010 - CY 2016

In the last 7 years Venice Airport has outperformed the Italian market  
 2016 pax evolution vs 2015: VCE +10.0%; Italy +4.6%; Europe +5.1%



## Venice airport in numbers

**9.6** MILLION PASSENGERS



**9** LONG HAUL DESTINATIONS

**6 NORTH AMERICA**

**3 MIDDLE EAST**

JFK  
EWR  
PHL  
ATL  
YUL  
YYZ

AUH  
DXB  
DOH

**50/100**

OVER 50 CARRIERS  
OVER 100 DESTINATIONS

**300M €**

**600M €**

**1** ITALIAN INTERCONTINENTAL OF 3 GATEWAYS

**2** HOME BASED CARRIERS VOLOTEA & EASYJET

**3** ITALIAN AIRPORT SYSTEM TOGETHER WITH TREVISO APT

**5** NORTH AMERICAN INTERCONTINENTAL CARRIERS SERVE VCE

**15** MAJOR EUROPEAN HUBS LINKED WITH MULTIPLE DAILY FREQUENCIES

INFRASTRUCTURE INVESTMENTS IN THE LAST 4 YEARS

IN THE COMING 5 YEARS

**86%**

INTERNATIONAL TRAFFIC

**27%**

TRAVEL FOR BUSINESS

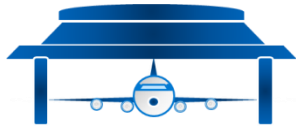
**46%**

POINT OF SALE ITALY

**27%**

OF ALL PAX CONNECT TO REACH THEIR FINAL DESTINATION

# Venice airport: the strategy



**home based carriers**  
*"strong links with the catchment area"*



7 based aircraft

5 based aircraft from S17

## hub connections

*"giving the catchment area accessibility to the world"*

A collection of airline logos representing hub connections, including Lufthansa, Air Dolomiti, British Airways, Iberia, Air Maroc, Air Berlin, Alitalia, Air France, TAP Portugal, Aeroflot, LOT, Tunisair, Austrian, Brussels Airlines, Turkish Airlines, CSA Czech Airlines, KLM, and Swiss International Air Lines.

## 4 POINT STRATEGY

### long haul

*"penetration of further afield territories through intercontinental hubs"*



American Airlines

UNITED DELTA

air transat rouge

QATAR AIRWAYS

Emirates

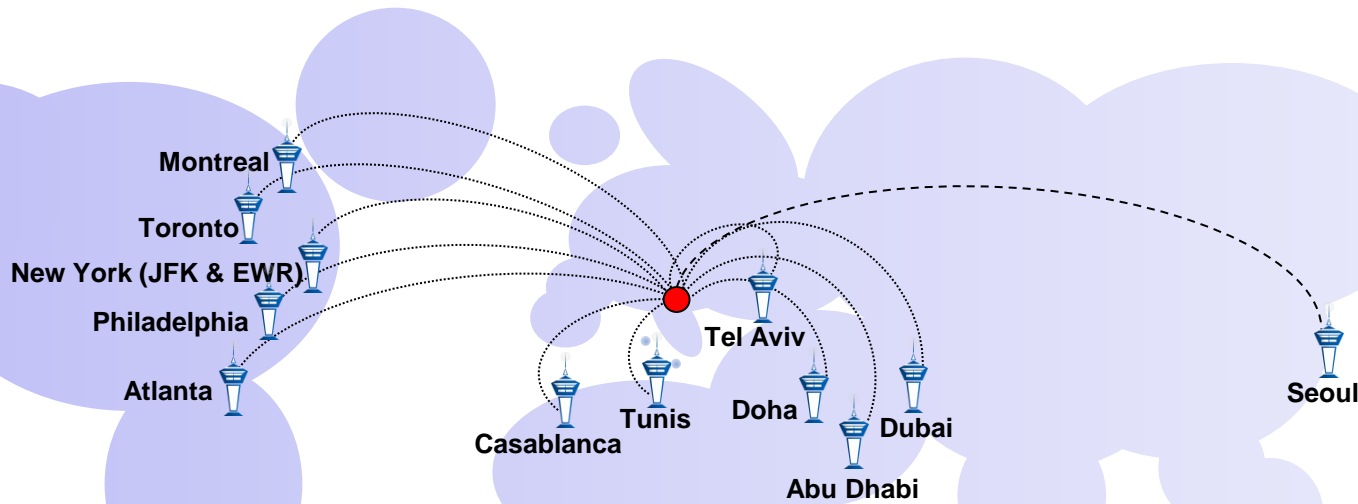
الإتحاد ETIHAD AIRWAYS ABU DHABI

### point to point traffic

*"capillarity – fast access to Europe & Mediterranean basin"*

A collection of airline logos representing point-to-point traffic, including Jet2.com, Monarch, Air Moldova, Air Arabia, Croatia Airlines, Vueling, British Airways, Germanwings, Aegean, HOP!, Norwegian.com, Aer Lingus, Luxair, Alitalia, El Al, Meridiana, Ryanair, Finnair, Transavia.com, Flyone, Blue Panorama, and SAS.

# The VCE medium & long haul network (Summer 2017 update)



**12 SCHEDULED DESTINATIONS**

**over 70 WEEKLY FREQUENCIES**

**1 CHARTER FLIGHT – 2WF SEOUL / SEASONAL**



- A** Traffic highlights
  - B** **The market**
  - C** The catchment area
  - D** New investments
-

## VCE traffic breakdown – onboard passengers – CY2016

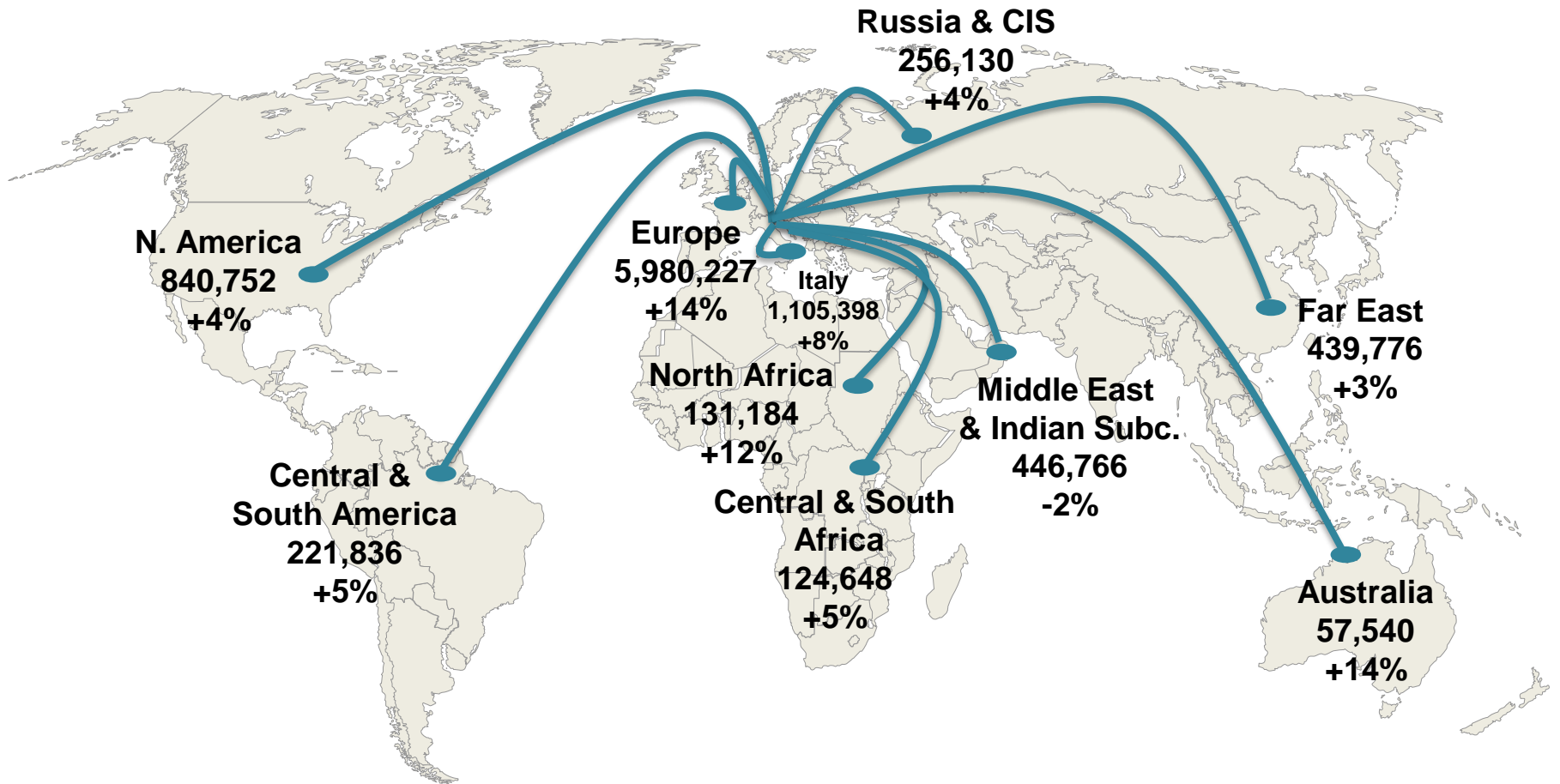
### VCE ONBOARD PASSENGERS - SCHEDULED TRAFFIC - CY 2016

Destinations with nbr. of yearly pax > 10,000

Destination	Pax CY 2016	% chg '16/'15	Destination	Pax CY 2016	% chg '16/'15	Destination	Pax CY 2016	% chg '16/'15
Paris CDG	751.299	10%	Copenhagen	98.618	52%	Bari	45.547	-8%
London LGW	719.438	11%	Geneva	97.953	7%	Athens	44.682	31%
Rome FCO	541.628	-2%	New York JFK	94.506	1%	Montreal	41.599	5%
Amsterdam	524.432	8%	Olbia	94.315	28%	Southend	40.194	-26%
Frankfurt	451.773	-3%	Philadelphia	93.229	-8%	Cagliari	36.758	4%
Paris ORY	364.382	7%	Edinburgh	84.319	184%	Chisinau	32.495	-17%
Naples	305.778	18%	Basel	83.063	30%	Istanbul SAW	32.115	101%
Barcelona	291.586	15%	Prague	80.380	229%	Toulouse	28.409	5%
Madrid	287.308	15%	Toronto	80.205	23%	Atlanta	27.635	-29%
Istanbul IST	253.522	-11%	Casablanca	79.251	59%	Warsaw	27.373	
Munich	226.960	4%	Hamburg	75.984	11%	Kiev	26.791	
Dubai	220.163	-7%	London LTN	69.776	17%	Tunis	26.721	-15%
Catania	194.958	14%	Tirana	67.881	-20%	Stockholm ARN	24.904	-9%
Brussels	181.403	-7%	Stuttgart	66.946	87%	Oslo	24.567	12%
Düsseldorf	176.322	17%	New York EWR	62.178	33%	Santorini	22.984	30%
Berlin SXF	166.388	16%	Berlin TXL	61.242	5%	Marseille	22.836	20%
Zürich	165.684	2%	Nice	60.306	19%	Helsinki	22.804	1%
Moscow SVO	155.820	-1%	Palermo	59.568	-8%	Bilbao	22.387	-9%
London LHR	149.378	25%	Dublin	59.425	15%	Mykonos	21.374	37%
Manchester	147.666	-2%	Cologne	57.387	-2%	London LCY	17.088	9%
Doha	143.666	22%	Bristol	56.654		Leeds	17.003	2%
Lisbon	134.480	4%	Bordeaux	54.504	76%	Ibiza	12.279	28%
Lyon	118.791	10%	Nantes	51.756	-10%	Menorca	10.779	152%
Vienna	107.256	-3%	Birmingham	48.370	13%	Others	316.347	3%
Abu Dhabi	99.836	50%	Tel Aviv	47.766	20%	<i>General Aviation</i>	<i>13.578</i>	<i>-10%</i>
<b>TOTAL</b>			<b>9.624.748</b>			<b>10%</b>		



## O&D traffic flows between Venice and the world – CY 2016



## O&D traffic flows between Venice and the world – CY 2016

ITALY								
IATA code	Final destination	Q1	Q2	Q3	Q4	TOTAL	% chg PY	% non-stop
NAP	Naples	70.032	87.978	67.626	85.182	<b>310.818</b>	17%	98%
FCO	Rome FCO	44.076	56.422	53.376	60.316	<b>214.190</b>	9%	100%
CTA	Catania	33.738	62.330	77.058	40.004	<b>213.130</b>	4%	92%
OLB	Olbia	1.086	26.304	63.348	3.776	<b>94.514</b>	28%	100%
PMO	Palermo	14.470	22.936	29.410	15.488	<b>82.304</b>	-11%	74%
CAG	Cagliari	7.044	18.190	34.036	6.050	<b>65.320</b>	16%	57%
BARI	Bari	12.424	19.438	15.694	11.148	<b>58.704</b>	-4%	79%
BDS	Brindisi	2.288	5.168	8.280	1.568	<b>17.304</b>	-34%	41%
AHO	Alghero	752	3.522	8.082	1.282	<b>13.638</b>	234%	54%
SUF	Lamezia-Terme	2.538	3.524	2.956	1.604	<b>10.622</b>	-25%	
LMP	Lampedusa	0	2.190	5.726	764	<b>8.680</b>	-10%	97%
PNL	Pantelleria	0	2.064	5.636	532	<b>8.232</b>	-6%	99%
REG	Reggio Calabria	1.014	1.242	1.426	648	<b>4.330</b>	-36%	
	Others	770	832	1.220	790	<b>3.612</b>	-25%	
	<b>TOTAL</b>	<b>190.232</b>	<b>312.140</b>	<b>373.874</b>	<b>229.152</b>	<b>1.105.398</b>	<b>8%</b>	<b>89%</b>

EUROPE								
IATA code	Final destination	Q1	Q2	Q3	Q4	TOTAL	% chg PY	% non-stop
LGW	London LGW	138.018	188.750	224.504	168.544	<b>719.816</b>	12%	100%
CDG	Paris CDG	103.500	152.468	155.476	136.224	<b>547.668</b>	12%	99%
ORY	Paris ORY	77.150	109.744	88.436	90.382	<b>365.712</b>	8%	100%
AMS	Amsterdam	66.022	100.030	97.726	79.384	<b>343.162</b>	17%	98%
BCN	Barcelona	51.602	73.152	94.364	59.740	<b>278.858</b>	15%	98%
MAD	Madrid	31.992	53.808	73.660	37.652	<b>197.112</b>	6%	87%
MAN	Manchester	26.396	55.142	69.526	36.408	<b>187.472</b>	-1%	93%
DUS	Düsseldorf	22.002	52.170	57.350	41.044	<b>172.566</b>	18%	95%
SXF	Berlin SXF	33.308	43.916	47.216	40.786	<b>165.226</b>	14%	100%
FRA	Frankfurt	25.836	38.628	36.480	31.098	<b>132.042</b>	8%	96%
BRU	Brussels	19.016	30.856	33.880	27.434	<b>111.186</b>	-14%	97%
LYS	Lyon	24.488	31.376	24.348	30.972	<b>111.184</b>	14%	97%
CPH	Copenhagen	8.746	33.152	49.054	18.258	<b>109.210</b>	39%	76%
GVA	Geneva	19.878	30.986	31.942	18.682	<b>101.488</b>	8%	97%
HAM	Hamburg	11.922	30.868	33.846	22.760	<b>99.396</b>	7%	77%
ZRH	Zürich	17.138	27.624	26.368	24.724	<b>95.854</b>	-5%	98%
LHR	London LHR	14.934	25.984	32.604	21.120	<b>94.642</b>	-3%	85%
EDI	Edinburgh	10.838	27.234	33.644	21.914	<b>93.630</b>	113%	89%
MUC	Munich	12.000	30.392	33.932	16.112	<b>92.436</b>	53%	97%
LIS	Lisbon	14.942	27.282	31.088	18.366	<b>91.678</b>	2%	89%
PRG	Prague	12.268	25.832	25.488	21.444	<b>85.032</b>	144%	93%



## O&D traffic flows between Venice and the world – CY 2016

EUROPE								
IATA code	Final destination	Q1	Q2	Q3	Q4	TOTAL	% chg PY	% non-stop
BSL	Basel	13.570	25.322	26.394	18.786	<b>84.072</b>	29%	99%
TXL	Berlin TXL	10.052	22.298	22.404	19.468	<b>74.222</b>	6%	89%
TIA	Tirana	19.432	17.828	17.780	18.828	<b>73.868</b>	-18%	92%
VIE	Vienna	14.336	20.262	19.230	18.982	<b>72.810</b>	5%	95%
STR	Stuttgart	6.240	23.024	25.170	16.444	<b>70.878</b>	71%	91%
LTN	London LTN	15.924	18.258	19.952	15.804	<b>69.938</b>	17%	100%
CGN	Cologne	9.028	20.026	23.350	14.470	<b>66.874</b>	11%	95%
NCE	Nice	10.228	19.258	23.702	10.886	<b>64.074</b>	15%	93%
BHX	Birmingham	6.038	18.438	28.672	10.490	<b>63.638</b>	8%	85%
DUB	Dublin	6.684	17.994	28.670	9.286	<b>62.634</b>	20%	86%
BOD	Bordeaux	6.712	21.162	16.794	15.760	<b>60.428</b>	67%	91%
BRS	Bristol	1.728	15.370	19.624	22.418	<b>59.140</b>	2249%	97%
NTE	Nantes	12.224	19.940	11.936	13.894	<b>57.994</b>	-7%	90%
ARN	Stockholm ARN	8.386	16.106	19.702	9.746	<b>53.940</b>	1%	44%
ATH	Athens	6.218	17.042	22.502	7.678	<b>53.440</b>	3%	66%
OSL	Oslo	5.638	12.516	19.870	9.382	<b>47.406</b>	9%	48%
TLS	Toulouse	8.124	13.556	9.634	8.626	<b>39.940</b>	-3%	74%
HEL	Helsinki	3.926	10.404	18.942	6.554	<b>39.826</b>	4%	54%
SEN	London SEN	11.634	13.774	9.106	4.194	<b>38.708</b>	-28%	100%
WAW	Warsaw	5.310	9.550	10.148	6.312	<b>31.320</b>	132%	73%

EUROPE								
IATA code	Final destination	Q1	Q2	Q3	Q4	TOTAL	% chg PY	% non-stop
BIO	Bilbao	4.256	7.272	14.288	4.990	<b>30.806</b>	-6%	73%
MRS	Marseille	6.220	9.046	7.934	7.246	<b>30.446</b>	13%	76%
JTR	Thira	0	4.860	18.958	696	<b>24.514</b>	30%	91%
JMK	Mikonos	0	3.422	18.072	48	<b>21.542</b>	36%	97%
LBA	Leeds	612	6.646	7.874	2.776	<b>17.908</b>	1%	93%
IBZ	Ibiza	254	4.340	12.786	210	<b>17.590</b>	21%	88%
LUX	Luxembourg	1.324	6.312	6.138	3.058	<b>16.832</b>	14%	68%
LCY	London LCY	394	5.402	8.432	2.290	<b>16.518</b>	4%	97%
HAJ	Hannover	2.896	4.988	3.848	4.440	<b>16.172</b>	-6%	
GOT	Gothenburg	3.304	3.860	5.922	2.852	<b>15.938</b>	3%	
RIX	Riga	1.246	3.646	8.574	1.322	<b>14.788</b>	51%	66%
BUD	Budapest	1.790	2.522	2.528	7.450	<b>14.290</b>	102%	42%
PMI	Palma Mallorca	890	2.978	8.986	1.302	<b>14.156</b>	4%	63%
OPO	Porto	2.110	4.348	5.138	2.370	<b>13.966</b>	17%	
AGP	Malaga	2.358	3.406	5.332	2.244	<b>13.340</b>	2%	10%
MAH	Menorca	76	2.100	9.702	124	<b>12.002</b>	123%	92%
BLL	Billund	1.096	2.740	5.550	1.730	<b>11.116</b>	113%	27%
GLA	Glasgow	858	2.866	5.014	2.062	<b>10.800</b>	-2%	40%
KRK	Krakow	758	1.272	1.536	6.770	<b>10.336</b>	144%	56%
	Others	36.670	67.296	127.132	45.549	<b>276.647</b>	5%	
	<b>TOTAL</b>	<b>990.540</b>	<b>1.690.844</b>	<b>1.978.258</b>	<b>1.320.585</b>	<b>5.980.227</b>	<b>14%</b>	<b>89%</b>

## O&D traffic flows between Venice and the world – CY 2016

### NORTH AFRICA

IATA code	Final destination	Q1	Q2	Q3	Q4	TOTAL	% chg PY	% non-stop
CMN	Casablanca	16.434	17.100	25.072	15.842	<b>74.448</b>	25%	91%
TUN	Tunis	7.078	7.150	11.936	6.776	<b>32.940</b>	-5%	74%
CAI	Cairo	2.006	2.228	2.928	1.962	<b>9.124</b>	1%	
ALG	Algiers	1.896	2.026	1.998	1.780	<b>7.700</b>	8%	
RAK	Marrakesh	468	472	698	588	<b>2.226</b>	-11%	
	Others	846	1.264	1.530	1.106	<b>4.746</b>	3%	
<b>TOTAL</b>		<b>28.728</b>	<b>30.240</b>	<b>44.162</b>	<b>28.054</b>	<b>131.184</b>	<b>12%</b>	<b>70%</b>

### RUSSIA & CIS

IATA code	Final destination	Q1	Q2	Q3	Q4	TOTAL	% chg PY	% non-stop
SVO	Moscow SVO	22.592	27.838	36.920	21.570	<b>108.920</b>	7%	94%
KBP	Kiev	3.732	8.254	10.848	8.990	<b>31.824</b>	159%	70%
KIV	Chisinau	5.544	6.526	8.644	8.994	<b>29.708</b>	-13%	98%
LED	St Petersburg	3.222	4.320	6.030	3.170	<b>16.742</b>	0%	
DME	Moscow DME	1.572	2.772	6.286	2.388	<b>13.018</b>	-14%	26%
MSQ	Minsk	990	1.272	2.606	1.136	<b>6.004</b>	2%	
TBS	Tbilisi	770	1.384	1.856	730	<b>4.740</b>	-6%	
EVN	Yerevan	340	824	2.652	628	<b>4.444</b>	50%	
IFO	Ivano-Frankovsk	0	134	2.200	986	<b>3.320</b>		99%
SVX	Ekaterinburg	456	526	892	556	<b>2.430</b>	-31%	
ALA	Almaty	538	654	768	426	<b>2.386</b>	-13%	
GYD	Baku	428	626	560	596	<b>2.210</b>	-29%	
ODS	Odessa	320	612	622	522	<b>2.076</b>	15%	
	Others	5.996	7.064	9.042	6.206	<b>28.308</b>	-33%	
<b>TOTAL</b>		<b>46.500</b>	<b>62.806</b>	<b>89.926</b>	<b>56.898</b>	<b>256.130</b>	<b>4%</b>	<b>64%</b>

### CENTRAL & SOUTH AFRICA

IATA code	Final destination	Q1	Q2	Q3	Q4	TOTAL	% chg PY
JNB	Johannesburg	2.814	6.382	6.786	4.590	<b>20.572</b>	-12%
DKR	Dakar	3.336	2.544	4.308	6.260	<b>16.448</b>	17%
LOS	Lagos	3.222	2.854	2.546	3.360	<b>11.982</b>	15%
ACC	Accra	2.180	2.174	3.952	2.644	<b>10.950</b>	2%
CPT	Cape Town	1.270	2.600	2.884	2.238	<b>8.992</b>	3%
MRU	Mauritius	1.380	1.166	1.550	1.974	<b>6.070</b>	-4%
NBO	Nairobi	1.298	1.114	1.542	1.610	<b>5.564</b>	3%
OUA	Ouagadougou	900	880	1.610	1.370	<b>4.760</b>	14%
SEZ	Mahe	1.010	920	1.434	1.056	<b>4.420</b>	46%
ADD	Addis Ababa	904	672	1.120	1.086	<b>3.782</b>	20%
	Others	7.108	6.656	8.616	8.728	<b>31.108</b>	8%
<b>TOTAL</b>		<b>25.422</b>	<b>27.962</b>	<b>36.348</b>	<b>34.916</b>	<b>124.648</b>	<b>5%</b>

## O&D traffic flows between Venice and the world – CY 2016

NORTH AMERICA								
IATA code	Final destination	Q1	Q2	Q3	Q4	TOTAL	% chg PY	% non-stop
JFK	New York JFK	13.028	30.058	39.484	23.170	<b>105.740</b>	-3%	53%
YYZ	Toronto	4.386	18.430	38.354	14.216	<b>75.386</b>	8%	67%
PHL	Philadelphia	3.220	19.674	24.814	9.598	<b>57.306</b>	36%	88%
LAX	Los Angeles	5.686	15.990	20.816	12.114	<b>54.606</b>	14%	
ATL	Atlanta	8.158	14.634	13.770	12.070	<b>48.632</b>	8%	14%
YUL	Montreal	3.308	11.322	23.198	9.378	<b>47.206</b>	6%	63%
EWR	New York EWR	4.400	13.886	22.598	6.000	<b>46.884</b>	14%	64%
ORD	Chicago	5.462	13.486	14.046	9.468	<b>42.462</b>	2%	
SFO	San Francisco	3.740	11.064	15.524	7.948	<b>38.276</b>	2%	
MIA	Miami	5.984	8.660	10.112	8.264	<b>33.020</b>	14%	
BOS	Boston	3.688	9.686	11.180	6.670	<b>31.224</b>	7%	
IAD	Washington	4.014	7.790	8.234	7.100	<b>27.138</b>	-2%	
DTW	Detroit	3.398	5.248	5.500	5.080	<b>19.226</b>	-16%	
IAH	Houston	2.368	5.842	6.174	4.178	<b>18.562</b>	5%	
YVR	Vancouver	1.144	4.886	6.730	3.156	<b>15.916</b>	10%	
MSP	Minneapolis	1.904	4.432	4.852	3.328	<b>14.516</b>	-10%	
SEA	Seattle	1.854	3.732	5.062	3.278	<b>13.926</b>	-4%	
DFW	Dallas	1.124	4.316	4.472	3.404	<b>13.316</b>	1%	
DEN	Denver	1.056	3.366	4.454	2.770	<b>11.646</b>	8%	
CLT	Charlotte	590	3.560	2.990	2.332	<b>9.472</b>	-7%	
MCO	Orlando	688	2.668	2.562	1.476	<b>7.394</b>	-12%	
SLC	Salt Lake City	646	1.934	2.424	1.480	<b>6.484</b>	3%	
LAS	Las Vegas	464	1.662	2.606	1.252	<b>5.984</b>	17%	
YYC	Calgary	508	1.614	2.300	1.390	<b>5.812</b>	-8%	
TPA	Tampa	332	2.014	2.250	1.108	<b>5.704</b>	-3%	
PDX	Portland	584	1.226	2.338	1.122	<b>5.270</b>	25%	
	Others	522	25.882	40.720	12.520	<b>79.644</b>	-7%	
	<b>TOTAL</b>	<b>82.256</b>	<b>247.062</b>	<b>337.564</b>	<b>173.870</b>	<b>840.752</b>	<b>4%</b>	<b>27%</b>

LATIN AMERICA							
IATA code	Final destination	Q1	Q2	Q3	Q4	TOTAL	% chg PY
GRU	Sao Paulo	9.780	11.216	11.600	12.278	<b>44.874</b>	6%
EZE	Buenos Aires	4.854	5.250	5.646	6.160	<b>21.910</b>	6%
GIG	Rio de Janeiro	3.958	5.656	5.598	6.152	<b>21.364</b>	4%
MEX	Mexico City	4.130	5.308	6.204	5.482	<b>21.124</b>	-1%
HAV	Havana	2.196	2.510	3.044	4.054	<b>11.804</b>	25%
SDQ	Santo Domingo	3.178	2.392	2.340	3.566	<b>11.476</b>	9%
LIM	Lima	2.398	2.594	3.518	2.524	<b>11.034</b>	21%
SCL	Santiago	1.570	2.676	2.848	3.222	<b>10.316</b>	36%
BOG	Bogotá	2.248	2.114	2.764	2.878	<b>10.004</b>	0%
PTY	Panama City	1.444	1.480	1.634	1.688	<b>6.246</b>	-6%
	Others	12.214	9.952	14.376	15.142	<b>51.684</b>	-4%
	<b>TOTAL</b>	<b>47.970</b>	<b>51.148</b>	<b>59.572</b>	<b>63.146</b>	<b>221.836</b>	<b>5%</b>

## O&D traffic flows between Venice and the world – CY 2016

### MIDDLE EAST & INDIAN SUBCONTINENT

IATA code	Final destination	Q1	Q2	Q3	Q4	TOTAL	% chg PY	% non-stop
IST	Istanbul	24.860	24.332	19.996	24.514	<b>93.702</b>	-23%	98%
TLV	Tel Aviv	16.608	18.514	28.248	14.316	<b>77.686</b>	16%	63%
DXB	Dubai	15.526	14.418	16.488	14.318	<b>60.750</b>	-6%	86%
DEL	Delhi	7.640	6.230	8.564	8.786	<b>31.220</b>	-1%	
SAW	Istanbul SAW	5.710	7.762	6.994	1.468	<b>21.934</b>	95%	100%
AUH	Abu Dhabi	5.588	4.492	4.804	5.550	<b>20.434</b>	-14%	59%
DOH	Doha	4.458	3.422	4.462	3.240	<b>15.582</b>	-22%	82%
ADB	Izmir	2.824	3.668	4.544	2.734	<b>13.770</b>	11%	
BOM	Mumbai	1.908	4.468	3.634	2.536	<b>12.546</b>	25%	
BEY	Beirut	1.024	2.026	6.166	1.468	<b>10.684</b>	18%	
IKA	Teheran	2.136	2.758	2.908	2.568	<b>10.370</b>	21%	
	Others	17.900	17.614	21.914	20.660	<b>78.088</b>	5%	
<b>TOTAL</b>		<b>106.182</b>	<b>109.704</b>	<b>128.722</b>	<b>102.158</b>	<b>446.766</b>	<b>-2%</b>	<b>55%</b>

### OCEANIA

IATA code	Final destination	Q1	Q2	Q3	Q4	TOTAL	% chg PY
MEL	Melbourne	2.812	3.746	6.986	4.164	<b>17.708</b>	10%
SYD	Sydney	2.582	4.016	6.072	3.880	<b>16.550</b>	12%
PER	Perth	1.474	2.312	3.582	2.532	<b>9.900</b>	20%
BNE	Brisbane	958	1.958	2.988	1.714	<b>7.618</b>	36%
ADL	Adelaide	394	1.094	1.484	996	<b>3.968</b>	0%
AKL	Auckland	192	268	494	380	<b>1.334</b>	9%
	Others	42	92	194	134	<b>462</b>	-27%
<b>TOTAL</b>		<b>8.454</b>	<b>13.486</b>	<b>21.800</b>	<b>13.800</b>	<b>57.540</b>	<b>14%</b>

### FAR EAST

IATA code	Final destination	Q1	Q2	Q3	Q4	TOTAL	% chg PY
ICN	Seoul	10.898	17.070	17.836	13.868	<b>59.672</b>	4%
PVG	Shanghai	13.148	11.788	14.894	11.860	<b>51.690</b>	-1%
BKK	Bangkok	14.754	9.562	11.072	11.936	<b>47.324</b>	20%
NRT	Tokyo NRT	8.608	9.810	10.646	9.842	<b>38.906</b>	-12%
HKG	Hong Kong	7.086	7.408	7.678	7.228	<b>29.400</b>	-1%
DAC	Dhaka	5.866	4.656	6.914	9.222	<b>26.658</b>	-6%
CMB	Colombo	4.842	5.284	6.408	5.704	<b>22.238</b>	14%
PEK	Peking	4.204	4.822	7.264	5.928	<b>22.218</b>	-13%
SIN	Singapore	3.090	5.460	6.924	5.772	<b>21.246</b>	27%
HND	Tokyo HND	4.030	4.430	6.696	5.160	<b>20.316</b>	47%
KIX	Osaka	2.704	3.528	4.294	3.384	<b>13.910</b>	-7%
MNL	Manila	2.580	3.632	3.690	3.480	<b>13.382</b>	16%
KUL	Kuala Lumpur	1.898	2.008	3.058	3.634	<b>10.598</b>	-11%
CAN	Guangzhou	2.120	2.436	3.118	2.720	<b>10.394</b>	-4%
CGK	Jakarta	1.552	2.062	3.458	1.714	<b>8.786</b>	-20%
TPE	Taipei	1.226	2.266	2.070	2.354	<b>7.916</b>	19%
XMN	Xiamen	1.814	1.106	1.890	1.698	<b>6.508</b>	21%
HGH	Hangzhou	1.582	1.352	1.552	1.130	<b>5.616</b>	-22%
	Others	4.656	4.534	6.146	7.662	<b>22.998</b>	
<b>TOTAL</b>		<b>96.658</b>	<b>103.214</b>	<b>125.608</b>	<b>114.296</b>	<b>439.776</b>	<b>3%</b>

# VCE connecting pax by hub & final destination area – CY 2016

Connecting pax by hub & by final destination area - CY 2016

		AFRICA		NORTH AMERICA		CENTRAL-SOUTH AMERICA		MIDDLE EAST & INDIAN SUBCONT.		FAR EAST & SOUTH EAST ASIA		EUROPE		ITALY		RUSSIA & CIS		OCEANIA		TOTAL		
		2016	% chg	2016	% chg	2016	% chg	2016	% chg	2016	% chg	2016	% chg	2016	% chg	2016	% chg	2016	% chg	2016	% chg	
Rank '15	Rank '16																					
	Hub																					
2	1	FRA	6.536	-26%	90.236	-5%	21.186	10%	8.952	-18%	36.732	-4%	155.812	2%	208	65%	12.076	-18%			331.738	-3%
1	2	FCO	28.754	-9%	26.582	-4%	26.386	15%	30.006	-4%	21.804	57%	71.252	-15%	118.654	-13%	5.070	-27%			328.508	-7%
4	3	CDG	23.184	5%	75.610	2%	38.130	-9%	3.120	-1%	25.614	-1%	30.832	3%	90	-6%	2.480	22%	244	-36%	199.304	0%
3	4	AMS	8.576	-3%	58.594	-18%	20.122	-3%	1.446	29%	25.816	-13%	66.510	3%	142	274%	3.886	-8%			185.092	-8%
6	5	IST	28.814	7%	18.466	81%	2.366	80%	58.392	-9%	42.724	1%	8.868	-10%	32	-30%	12.506	-29%			172.168	0%
5	6	DXB	21.696	-5%	152	-51%	152	4%	26.242	-1%	89.104	-13%	2	-50%					31.966	-4%	169.314	-8%
8	7	MAD	5.026	-1%	16.016	26%	64.572	10%	32	45%	468		53.688	12%			2				139.804	12%
7	8	MUC	1.414	75%	30.826	9%	4.260	-6%	3.320	-12%	8.308	16%	80.416	-32%	152	13%	8.044	-4%			136.740	-20%
9	9	DOH	7.398	87%	34	467%	40	5%	27.236	38%	93.684	23%					14	600%	6.832	-15%	135.238	25%
14	10	AUH	2.212	-66%	2	-83%	2	-83%	22.468	83%	51.696	80%	4		2				17.858	121%	94.242	70%
16	11	LHR	1.126	26%	59.340	68%	3.698	135%	548	52%	3.760	60%	5.832	-3%	34	70%	4		630	16%	74.972	59%
11	12	BRU	9.410	4%	7.482	-28%	10		230	-45%	934	41%	50.398	14%	86	10%	726	-63%			69.276	4%
13	13	ZRH	1.518	5%	20.766	1%	4.970	57%	3.916	5%	10.796	13%	24.590	13%	136	79%	1.090	-11%			67.782	10%
2	14	SVO			2.546	-38%	480	33%	1.188	-33%	21.182	-34%	168	-19%	6	50%	27.204	11%			52.774	-16%
15	15	LIS	6.538	13%	4.158	63%	26.356	-10%					15.108	13%							52.160	2%
		Others	11.700	101%	205.376	-8%	9.106	14%	14.796	1%	7.154	29%	111.764	-1%	174	-55%	18.842	-3%	10	-82%	378.922	-3%
		TOTAL CONX	163.902	2%	616.184	0%	221.836	5%	201.892	4%	439.776	6%	675.244	-4%	119.716	-12%	91.944	-9%	57.540	14%	2.588.034	0%

- 🌐 Main 3 hubs for each area indicated in yellow
- 🌐 CY 2016 connecting passengers: 27% of total VCE airport traffic
- 🌐 Main intermediate hub for passengers departing from Venice: Frankfurt, followed by Rome and Paris
- 🌐 Global market shares: European & Mediterranean hubs:78%; Middle East hubs:15%; North American hubs:7%

- A** Traffic highlights
- B** The market
- C** **The catchment area**
- D** New investments



## Location of Venice in the North-East Italy

8 million inhabitants within 90' drive time, more than 10 million within 120' drive time



## Venice airport catchment area

### A well balanced mix of incoming/outgoing leisure, business traffic and ethnic flows

business traffic

One of the strongest economy in Europe, with a wide manufacturing footprint



**BUSINESS**  
27%

leisure traffic

Two of the “must see” destinations of the world, Venice and the Dolomites Mountains, both Unesco World Heritage Sites



**LEISURE**  
59%

ethnic traffic

A large and diversified foreign community, strong driver of ethnic traffic



**ETHNIC / VFR**  
14%

cruise traffic

Over 1.6 million cruise passengers in CY 2016; over 15 millions in the last 10 years

**INCOMING 70%**

**OUTGOING 30%**

## The catchment area – key tourism indicators

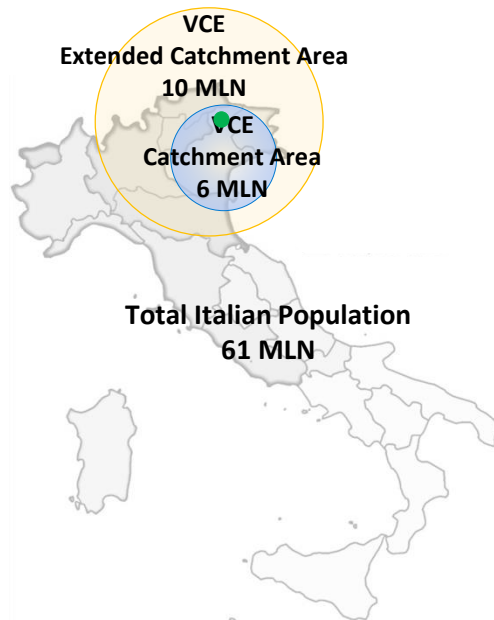
VENETO REGION - TOURISM FLOWS - CY 2016					
Country	Arrivals				Average days of stay
	Nbr. of tourists	% chg '16/'15	% chg '16/'11	% share on total arrivals	
Germany	2.640.707	6,6%	14,2%	14,8%	5,8
Austria	849.243	4,4%	10,4%	4,8%	4,3
United States	829.728	0,9%	17,4%	4,6%	2,2
United Kingdom	708.145	13,5%	53,3%	4,0%	3,7
France	613.443	4,1%	-8,2%	3,4%	3,0
China	612.905	-26,2%	58,2%	3,4%	1,3
Switzerland-Liechtenstein	404.233	4,8%	27,3%	2,3%	4,6
Netherlands	377.197	5,8%	-3,0%	2,1%	7,0
Spain	316.340	14,2%	-17,2%	1,8%	2,3
Poland	256.020	11,1%	22,8%	1,4%	4,0
South Korea	250.526	8,1%	111,2%	1,4%	1,3
Russia	191.603	1,7%	-20,7%	1,1%	3,6
Denmark	181.589	12,8%	7,8%	1,0%	7,1
Czech Republic	178.276	-2,6%	3,7%	1,0%	5,2
Australia	175.414	-3,3%	0,8%	1,0%	2,3
Japan	173.878	-18,0%	-35,4%	1,0%	1,6
Belgium	172.356	4,2%	9,8%	1,0%	4,2
Brazil	153.094	-14,5%	-18,0%	0,9%	2,2
Hungary	147.657	4,8%	17,4%	0,8%	3,9
Canada	146.665	-1,4%	4,6%	0,8%	2,3
India	125.067	1,6%	40,2%	0,7%	1,7
Romania	120.327	14,2%	40,1%	0,7%	3,5
Argentina	116.198	18,2%	74,8%	0,7%	1,9
Israel	108.436	8,1%	44,0%	0,6%	3,5
Sweden	98.473	8,3%	23,2%	0,6%	3,5
Turkey	93.438	2,4%	74,8%	0,5%	1,9
Ireland	77.620	17,9%	53,5%	0,4%	5,4
Mexico	71.768	1,7%	19,2%	0,4%	1,8
Croatia	69.565	12,4%	53,7%	0,4%	2,0
Norway	61.847	4,4%	6,9%	0,3%	3,6
Others	1.204.158	4,9%	21,6%	6,7%	2,6
<b>TOTAL FOREIGNERS</b>	<b>11.525.916</b>	<b>2,8%</b>	<b>15,1%</b>	<b>64,5%</b>	<b>3,8</b>
<b>TOTAL ITALIANS</b>	<b>6.330.651</b>	<b>4,7%</b>	<b>10,0%</b>	<b>35,5%</b>	<b>3,4</b>
<b>TOTAL</b>	<b>17.856.567</b>	<b>3,5%</b>	<b>13,3%</b>		<b>3,7</b>

a 360° tourism destination



**18 MILLION TOURISTS – VENETO, CY 2016**  
**3.5% TOURIST ARRIVALS GROWTH over 2015**  
**3,7 AVERAGE NIGHT STAY**  
**65% FOREIGN TOURISTS**

## The catchment area – key demographic indicators



- † With over 6 million passengers in the immediate catchment area and 10 million within 2 hour drive Venice represents 10% and 17% respectively of the Italian population
- † Foreign residents represent 10% of the population of the area, with a market share of 12% on the total foreign population in Italy

Venice airport catchment area  
Non Italian residents at 31.12.2015

Top 20 origin countries	Presences 2015	Share on total Italy
Romania	140.673	12%
Morocco	53.975	12%
Albania	47.661	10%
Moldova	39.586	28%
China	36.497	13%
Serbia	22.906	54%
Ukraine	21.695	9%
Bangladesh	20.745	17%
India	17.937	12%
Macedonia	16.800	23%
Kosovo	15.525	36%
Nigeria	14.507	19%
Ghana	13.195	27%
Sri Lanka	11.843	12%
Bosnia-Erzegovina	11.127	41%
Senegal	9.469	10%
Croatia	8.767	49%
Philippines	7.404	4%
Poland	6.397	7%
Tunisia	6.254	7%
Others	80.180	7%
<b>Total Foreigners</b>	<b>603.143</b>	<b>12%</b>

## Main brands headquartered in the Veneto region

**Wine** GDO & GDS  
 EyeGlasses Process Industry  
 Automotive Clothing Pharma Shoes  
 Aerospace **Culture** Food&Beverag  
 Entertainment Furniture White Goods  
**Engineered Prod** Heavy Eng Prod  
 Sport Equipment Insurance  
**Jewelry**

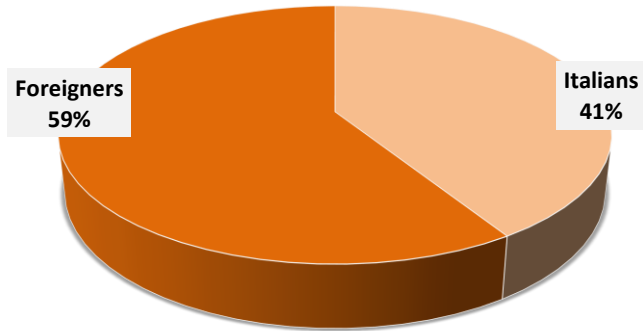


- Over 520,000 companies in the catchment area (10% of total Italy)
- Brand names recognized the world over
- Territory characterized by industrial districts: clothing, shoes, eyeglasses, ...

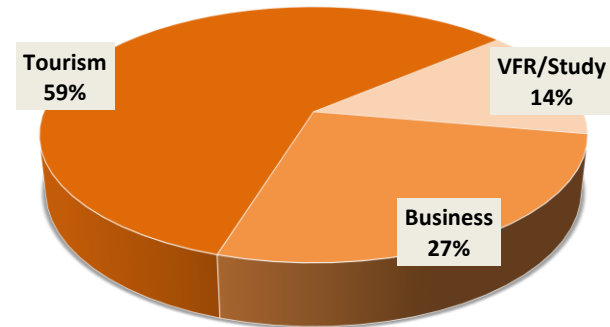


# Venice airport passenger profile survey

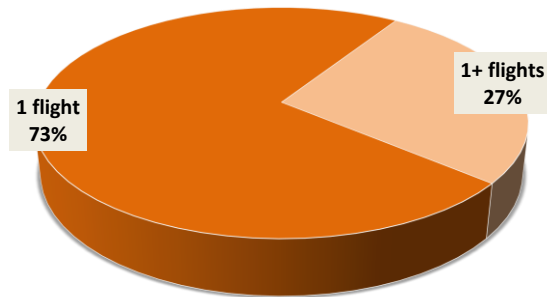
VCE airport pax  
Italians/Foreigners breakdown



VCE airport pax  
Reason for travel



VCE airport pax  
Non stop / Via hub breakdown



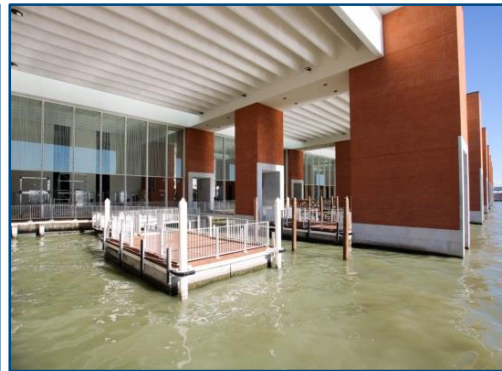
- The Venice passenger is characterized by a high earning professional that travels frequently, with a strong share of business travel
- 27% of Venice passengers use connecting flights to reach their final destination

- A Traffic highlights
- B The market
- C The catchment area
- D New investments**

## New Water Terminal

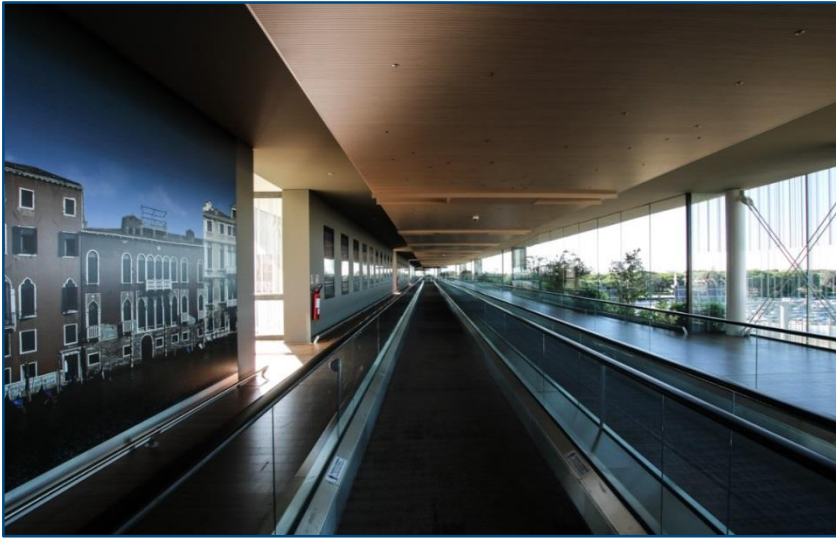



- ✈ 30% of all passengers (around 3 million) reach the airport by sea. The new water terminal hosts 24 docks that serve: water buses, water taxis, private hire boats, inside its covered 5,000 sqm covered area. As well it hosts a number of services for passengers, like a bar and ticket offices



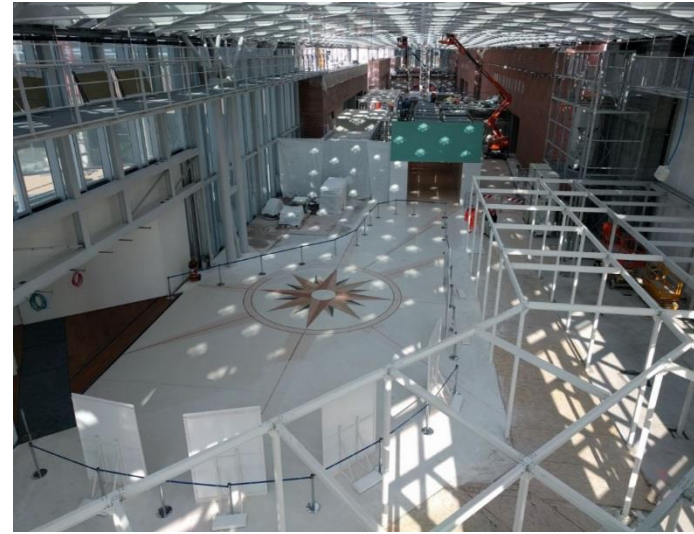


## New Moving Walkway – linking Water & Passenger Terminal



 The moving walkway bridges the 365 meters that separate the water terminal from the passenger terminal, as well as linking the multi-storey carpark which hosts the car rental companies. Passengers travel 10 meters above ground and arrive directly at the departures area

## Landside Terminal extension



- The landside terminal extension will add an additional 11,000 sqm which will eliminate congestion at the check-in areas. It will host new ticket offices & self-check-in kiosks, as well as a new food court and some retail spaces. This area is propaedeutic to the future airside terminal extensions to be realized in the coming years